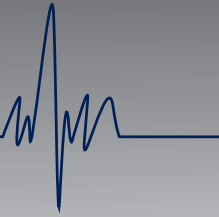




Solutions Start Here...



Solutions Start Here

www.smpcanada.com

SMP Canada

10 Sims Crescent, Richmond Hill
Ontario, L4B-1K9 Canada
Tel: (905) 764-7767 Fax: 1-866-627-9798
support@smpcanada.com

Platinum Series

INSTALLATION INSTRUCTION



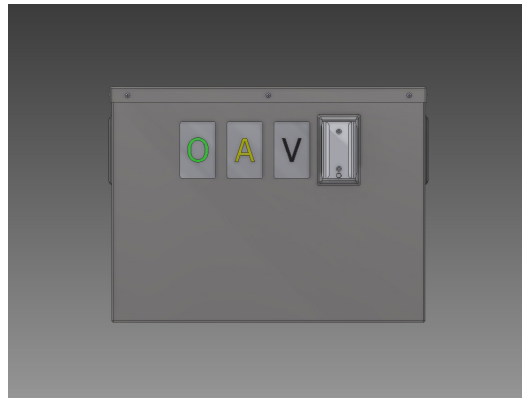
INSTALLATION INSTRUCTION

FLOOR PEDESTAL PLATINUM SERIES

Note

The SMP Floor Pedestal installation should conform to local building codes.

The installation instructions provided are for the SMP standard products. Slight modifications to the installations may be required. The product shipped to the job site may not be exactly as shown on the installation drawings.





INSTALLATION INSTRUCTION

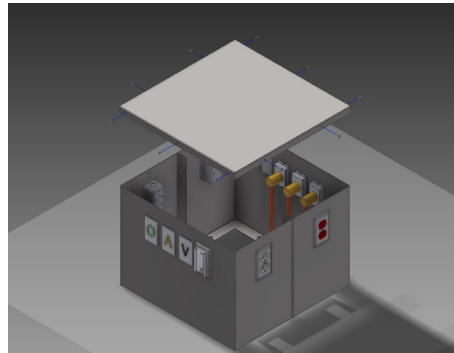
FLOOR PEDESTAL PLATINUM SERIES

Before Installation

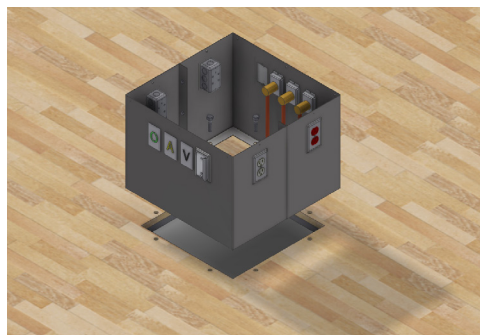
1. The copy of the final approved shop drawing(s) and/or submittal package must be reviewed. These documents provide technical information specific to your installation such as:
 - Equipment types and quantities
 - Room numbers and location
 - Shop drawings of each unit type
2. Remove the floor pedestal you wish to install from the shipping box. The content of each shipping box is listed on the shipping document(s)

Installation

1. Remove the top cover by loosening the 10 screws around the top attaching it to the floor pedestal.



2. Anchor the floor pedestal to the ground by inserting 4 bolts or screws on the base of the floor pedestal. Please note that SMP does not provide the bolts used to anchor the floor pedestal.

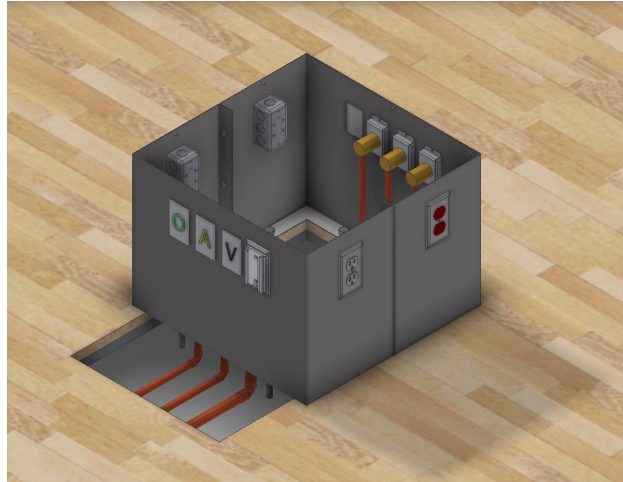




INSTALLATION INSTRUCTION

FLOOR PEDESTAL PLATINUM SERIES

4. Make all on-site connections.



5. Replace the top cover removed in step 1.

Finished Product

